



Lunesdale Court | Hornby
£280,000



lunevalley
ESTATES.



scan me to view online!



2  1 
2  2 

 **lunevalley**
ESTATES.



EPC - D



Band C



Leasehold





A beautiful garden, contemporary kitchen, generous lounge, and high ceilings, all in the lovely village of Hornby.. this could be the perfect downsize!

Lunesdale Court is a former 1800s workhouse which has been carefully restored in the 1980s into a charming semi-detached bungalow. The impressive stone built dwelling is now vacant and ready for its new owner; being offered with no chain delay.



The accommodation briefly comprises of a warm and welcoming entrance hallway leading to a light and spacious kitchen diner with wooden worktops and modern white units. There is also a recently serviced gas central heating boiler. The lounge is also a great entertaining space, with dual sash windows, original feature fireplace, and French doors leading out onto the gorgeous rear garden. There are two well-proportioned double bedrooms, freshly carpeted and the second of which features fitted wardrobe storage. There is a modern three piece shower room with walk in shower, low flush wc and hand basin vanity unit.





Lunesdale
Court

Externally, Lunesdale Court benefits from ample driveway space with parking for two vehicles. There is a delightful walled garden to enjoy, which has been carefully looked after by the previous owner to provide lots of colour and interest with thoughtfully chosen flowering plants. Walk out through the French doors onto the paved patio sun terrace, leading onto lawned areas which are complimented by an array of plants, trees, and mature shrubbery. The generous garden is great for an avid gardener or someone who likes to potter in the garden in their spare time. There is even frontage at the front of the bungalow to include manicured lawn area and shrubbery.

Hornby is a sought-after village location, nestled in the heart of the Lune Valley. Hornby provides easy access to the M6, Lancaster and Kirkby Lonsdale. The village has a range of amenities including shop, Post Office/tea room, butchers, GP Surgery, swimming pool and well-regarded primary school. In the catchment area for excellent secondary education options in Lancaster and nearby to the Forest of Bowland Area of Outstanding Natural Beauty, the Yorkshire Dales, Morecambe Bay and Lake District, all perfect to enjoy great days out in stunning countryside.



Entrance Hall

Welcoming hallway with two useful storage cupboards.

Kitchen/Diner

A light and spacious kitchen diner with wooden worktops and modern white units. There is also a recently serviced gas central heating boiler.

Lounge

Generously proportioned living area with dual sash windows, original feature fireplace, and French doors leading out onto the gorgeous rear garden.

Bedroom One

Double bedroom with new carpets and feature sash windows.

lunevalley
ESTATES.

External

Driveway parking for two cars, manicured frontage and delightful rear garden.

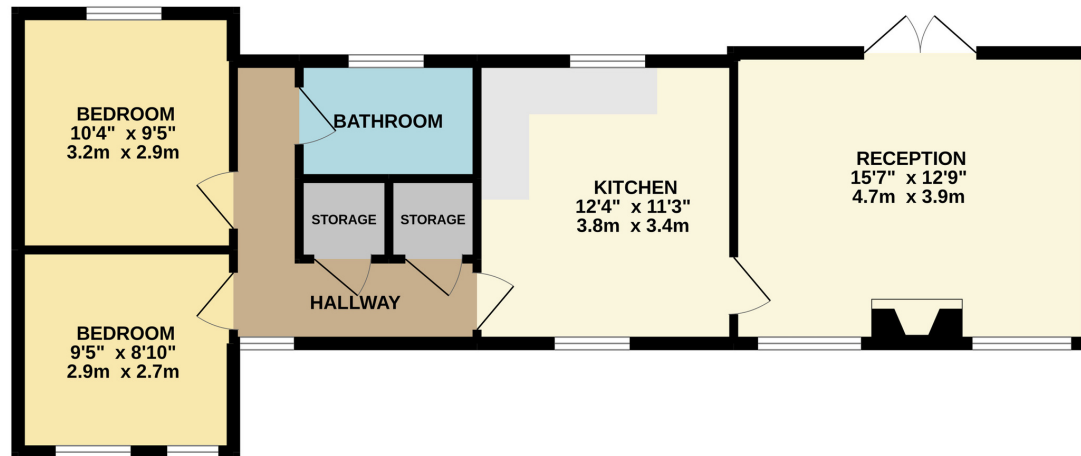
Bathroom

A modern three piece shower room with walk in shower, low flush wc and hand basin vanity unit.

Bedroom Two

A second double bedroom with new carpets and feature sash windows.

GROUND FLOOR
645 sq.ft. (59.9 sq.m.) approx.



TOTAL FLOOR AREA : 645 sq.ft. (59.9 sq.m.) approx.
Whilst every attempt has been made to ensure the accuracy of the floorplan contained here, measurements of doors, windows, rooms and any other items are approximate and no responsibility is taken for any error, omission or mis-statement. This plan is for illustrative purposes only and should be used as such by any prospective purchaser. The services, systems and appliances shown have not been tested and no guarantee is given as to their operability or efficiency can be given.
Made with Metropix ©2022

The Essentials



The Royal Oak
0.8 miles



Londis
0.6 miles



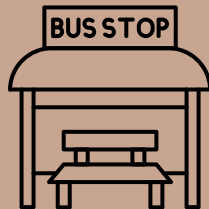
The Fenwick
1.4 miles



Boots Pharmacy
4 miles



Hornby Castle
0.9 miles



Ingleborough View
0.3 miles





lunevalley

ESTATES.



Scan to visit our website!

Suite 8, Willow Mill, Caton, LA2 9RA
01524 256625
team@lunevalleyestates.com
lunevalleyestates.com