



Salford Road | Galgate
£175,000



scan me to view online!



3  1 

2 

 **lunevalley**
ESTATES.



EPC - D



Band A



Freehold





A wonderfully spacious and contemporary terraced home with a garage and rear garden, Salford Road offers three-storey modern living in the popular village of Galgate to the south of Lancaster.

Situated on Salford Road, close to the village amenities and offering straightforward access to Junction 33 of the M6 Motorway and Lancaster University it is ideally positioned for the commuting professional and busy families alike. The property benefits from new anthracite grey UPVC front door, rear French doors, and sash windows. Walk down the front path, and open the front door into the spacious and tastefully decorated lounge with inglenook fireplace and wood burner. There is handy alcove storage and a large sash window allowing for plenty of light. From here we lead into a separate dining room with industrial style lighting, another great living space which could be used as second seating area or home office if so desired, with a useful under the stair storage cupboard.



There are a couple of steps from here to the modern fitted kitchen. The kitchen is a gorgeous space with an abundance of solid wood worktops, an expansive breakfast bar, and an array of white wooden fitted units, a Belfast sink, double oven, fridge freezer, dishwasher and wine cooler. There are spotlights and a skylight providing lots of light to the room. The kitchen leads on into a utility area where there is the recently serviced gas central heating boiler, space for appliances, and you will also find a modern downstairs WC. French doors from the utility room step out onto the rear garden.





Salford Road

On the first floor, there are two good sized double bedrooms with fitted blinds and grey carpets, along with a luxurious monochromatic family bathroom. Fully tiled bathroom suite featuring bath with modern electric shower over, low flush WC, hand basin, and towel radiator.

Upstairs on the second floor are another two generous loft rooms – which can be used as two double bedrooms or opened up into one huge loft suite. The main loft bedroom features an industrial style bedframe with bedside lights and two windows offering pleasant views overlooking Galgate village. The other loft room has a Velux window and can easily be turned into a fourth bedroom with the addition of a stud wall. The property is fully central heated and double glazed.

Externally there is a well-kept frontage with driveway access at the side of Salford Road, which leads down to a parking space with detached garage, and rear garden. The garden is a great space to enjoy, and is fully enclosed with grey fence panels, patio decking and a generous astroturfed lawn area.



Lounge

A spacious and tastefully decorated lounge with inglenook fireplace and wood burner. There is handy alcove storage and a large sash window allowing for plenty of light.

Dining Room

Dining room with industrial style lighting, another great living space which could be used as a second seating area or home office if so desired, with a useful under the stair storage cupboard

Kitchen

Modern kitchen with an abundance of solid wood worktops, an expansive breakfast bar, and an array of white wooden fitted units, a Belfast sink, double oven, fridge freezer, dishwasher and wine cooler. There are spotlights and a skylight providing lots of light to the room.

Utility Room

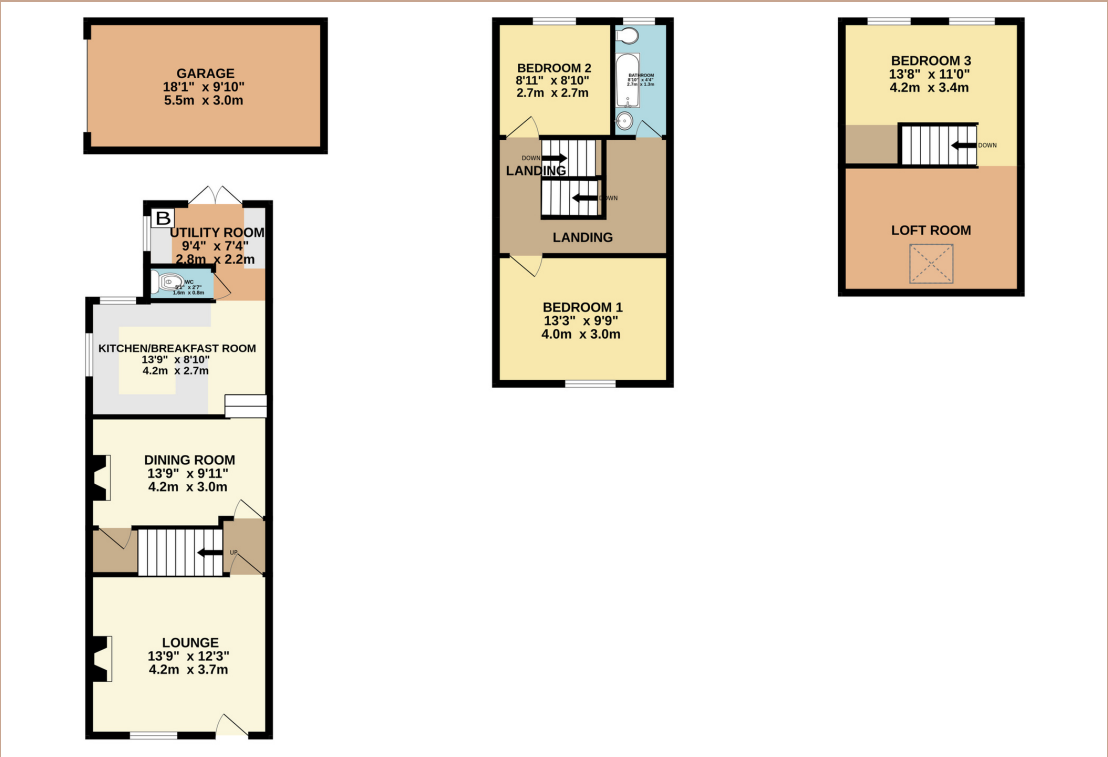
Handy utility area where there is the recently serviced gas central heating boiler, space for appliances, and you will also find a modern downstairs WC. French doors open onto the rear garden from here.

Bedroom One

Good sized double bedroom with fitted blinds and grey carpet.

Bedroom Two

Another good sized double bedroom with fitted blinds and grey carpet.



Bathroom

Monochromatic bathroom suite featuring bath with modern electric shower over, low flush WC, hand basin, and towel radiator.

Loft Room

Another useful loft room which has a Velux window and can easily be turned into a fourth bedroom with the addition of a stud wall.

Bedroom Three

Main loft bedroom features an industrial style bedframe with bedside lights and two windows offering pleasant views overlooking Galgate village.

The Essentials



The New Inn
0.09 miles



Galgate Spar
0.06 miles



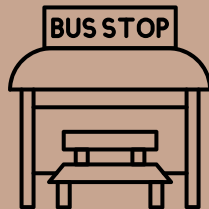
The Plough
0.2 miles



Lancaster
Medical Practice
0.1 miles



University
Sports Centre
1.6 miles



Crossroads
0.09 miles





lunevalley

ESTATES.



Scan to visit our website!

Suite 8, Willow Mill, Caton, LA2 9RA
01524 256625
team@lunevalleyestates.com
lunevalleyestates.com