



Margarets Way | Appleby

 **lunevalley**
ESTATES.



3  2 
1  3+ 

 **lunevalley**
ESTATES.



EPC - D



Band B



Freehold





Welcome to this charming 3-bed dormer bungalow, nestled in the peaceful Margarets Way. This delightful property showcases a harmonious blend of comfort and space. Step inside and be greeted by a warm and inviting atmosphere. This charming Dormer Bungalow is ready to move into for someone looking to downsize, or for those with vision and the need for more space, it could be easily renovated into something quite spectacular!...Many residents on Margarets Way have made changes to the original layouts of these Bungalows and the results are nothing short of astounding.



The ground floor features a spacious living room, perfect for relaxing or entertaining guests. Large windows flood the room with natural light, creating a cheerful ambiance. Adjacent to the living room, you'll find a well-appointed kitchen, providing an ideal space for culinary adventures. Completing the ground floor are two good sized bedrooms, offering ample space for rest and privacy. These rooms could also serve as a home office or a cosy study area, catering to your specific needs.





The property is complemented by a well-maintained garden, offering a serene outdoor space for relaxation and recreation. Whether it's enjoying a cup of coffee on the patio or hosting gatherings with loved ones, this enchanting garden is a haven of tranquillity.

Conveniently located amenities such as schools, shops, and parks are within easy reach, ensuring a convenient and vibrant lifestyle. The bungalow also benefits from excellent rail links, making commuting a breeze.

Many residents on Margarets Way have made changes to the original layouts of these Bungalows and the results are nothing short of spectacular!

With its cosy interiors, beautiful garden, and desirable location, this 3-bed dormer bungalow presents a wonderful opportunity to embrace comfortable and convenient living. Don't miss the chance to make this delightful property your own.



Lounge

With a large picture window that floods the room with light and gives a lovely view of the low maintenance front garden, the lounge has generous proportions that would house a large family for Movie Night or just to cosy in on a winter's night in front of the living flame gas fire. Freshly decorated the room is neutral in tone and is warm and welcoming to both homeowners and visitors alike.

This spacious room is a surprise to all that enters due to its size and views out onto the delightful garden. An extended space out onto the garden, The Kitchen is more than you would expect to find! The dining space is on a split level to the Kitchen, where two steps takes you down the 'U' shaped Kitchen. Lots of work space to conjure those family feasts. An eye level oven with insert electric hob are the fitted appliances but there is space for a tall fridge freezer and dishwasher if required. The views out onto the garden are delightful and the large windows capture the light perfectly.

The Kitchen

Family Bathroom

The family Bathroom may benefit from updating, but this good sized room currently offers a full sized bathtub with overhead shower, sink in a vanity unit with mahogany slatted doors and a low flush WC.

Bedroom Three

Bedroom Three is the smaller of the three bedrooms but would still accommodate a double bed. The current vendors have added a small shower enclosure which would make Bedroom Three a perfect guest room. A large closet, ideal for hanging clothes and the immersion tank is also housed here.

Bedroom Two

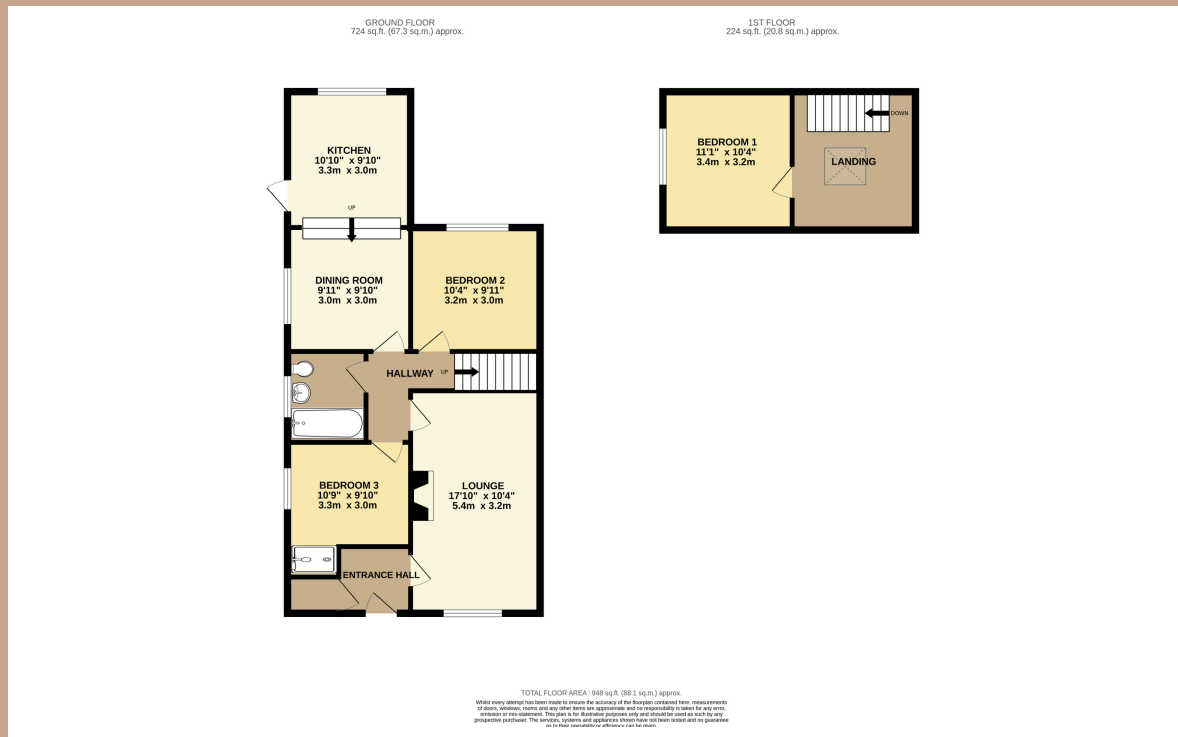
Bedroom two has the loveliest of views out onto Appleby Castle and the garden. A double room that offers a tranquil and cosy space for its resident. This room is conveniently located next to the Family Bathroom and the stairs that lead to Bedroom one on the upper floor.

Bedroom One

Walking up to the upper level, you will be amazed at the space that Bedroom One and the upper landing offers. Keep this space as is, or convert into a Master Suite with Dressing area and En-suite! The two deep eves cupboards either side of this hallway could easily be opened out to create a large and surprising space. The Bedroom offers enough space for a double bed and bedroom furniture and is decorated in neutral tones.

The Gardens

The gardens of this lovely home start at the front where borders are easily maintained and ivy climbs its way along the front wall. A gravel centre piece would be the perfect place for elegant pots to showcase their blooms. A parking space is next to the long drive which benefits from having a full sized car port along to the back garden. The rear garden is a delightful space which houses two large sheds, a green house and a Summer House which is connected to power and a Tv ariel. No more arguments about who goes where to watch the Big Match! A large patio area, mature planting and laid to lawn, the garden offers so much!



lunevalley
ESTATES.

The Essentials



The Crown And Cushion
0.5 Miles



Co-op
0.5 Miles



Angelo's
Ristorante
0.5 Miles



Boots Pharmacy
0.5 Miles



Lake Ullswater
22 Minute
drive



Bridleways And
County Side Walks
0.5 Miles





lunevalley

ESTATES.



Scan to visit our website!

Suite 8, Willow Mill, Caton, LA2 9RA
01524 256625
team@lunevalleyestates.com
lunevalleyestates.com