



Littledale Road | Brookhouse





4/5  2 
3  3+ 

 **lunevalley**
ESTATES.



EPC - C



Band D



Freehold





Follow the enchanting curve of the Beech hedge as it gracefully guides you along the driveway to the captivating residence of 26 Littledale Road. As you arrive, be greeted by ample parking on the extended drive, ensuring convenience and comfort. Ascend the two shallow steps, and let the path lead you to the modern front door, a masterpiece of craftsmanship that stands as one of the most exquisite entrances you will encounter. Pause for a moment to appreciate its beauty, for it embodies the essence of elegance.

Immerse yourself in the tranquil ambience of village life as you step inside. The stunning hallway, a focal point of this double fronted home, sets the tone for the delightful discoveries that await. Solid wooden flooring gracefully flows into the kitchen diner, where culinary creativity flourishes. Convenient built-in storage beneath the stairs and a practical utility room nearby ensure a clutter-free living experience.



On the ground floor, the main living room awaits at the rear of the property. Here, dual aspect windows frame breathtaking views of the gardens, inviting you to revel in the wonders of nature or watch your children joyfully explore their outdoor haven. To the front, a versatile sitting room awaits, offering a sanctuary for relaxation, a productive workspace, or a haven for play. Its flexibility adapts effortlessly to your desires, transforming into a guest room as needed. Prepare to be enchanted by the elegant kitchen diner, a haven for culinary enthusiasts. Traditionally styled with a heritage feel, this culinary masterpiece boasts pale sage green cabinets, complemented by solid granite worksurfaces. Meticulously integrated appliances add a touch of seamless sophistication. The breakfast bar, a charming centerpiece, divides the space, ideal for casual dining or displaying an indulgent buffet on Boxing Day.



Ascending to the first floor, you will be greeted by an abundance of natural light cascading through a large floor-to-ceiling window, gently illuminating your path and infusing the mornings with a warm embrace as the sun gracefully rises. The expansive master bedroom awaits, nestled at the rear of the home. A luxurious ensuite shower room, adorned with Italian imported tiled flooring, complements the tranquil atmosphere. A walk-in dressing area provides ample storage space, while French doors open to a Juliette balcony, offering a serene retreat for those quiet moments of reflection.

Three additional double bedrooms grace the first floor, each thoughtfully designed with its unique charm. One bedroom shares the captivating rear view, while the other two boast elevated vistas that stretch over the rooftops, revealing the picturesque tree-lined countryside beyond. Immaculately decorated, these bedrooms offer a haven of relaxation and comfort.

The spacious 4-piece bathroom is a sanctuary in itself, featuring a captivating Victorian claw foot bath as its centrepiece, accompanied by a generous shower adorned with a complementary Victorian rain head shower. The carefully chosen tiled floor harmonises seamlessly with the overall aesthetic.

Prepare to be captivated by the extensive gardens and breathtaking views that envelop 26 Littledale Road. These generous grounds embrace the home on three sides, boasting verdant lawns, mature hedges, and fruit trees that create a tapestry of natural splendor. A charming garden room invites you to indulge in tranquil moments of escape. The gardens are artfully zoned, offering an array of idyllic seating areas to savour different perspectives and enjoy the harmony of nature. Adjacent to the lounge and kitchen diner, a spacious sheltered patio beckons, providing a perfect setting for outdoor relaxation and entertainment. For nature enthusiasts, a portion of the garden is currently being allowed to grow naturally, encouraging flowers and insects to thrive.





Kitchen/Diner

Prepare to be enchanted by the elegance of the kitchen diner. Stepping into this culinary masterpiece, you will be greeted by a harmonious blend of timeless charm and contemporary style. The sage green cabinets exude a sense of classic sophistication, perfectly complemented by the exquisite solid granite work surfaces. Every detail has been meticulously considered, with appliances seamlessly integrated into the design. The breakfast bar, a delightful centrepiece, divides the kitchen and dining areas, providing a perfect spot for casual dining or showcasing delectable delights on a joyous Boxing Day feast. Indulge in the culinary arts with style and grace in this truly elegant space.

Living Room

Experience the epitome of comfort and relaxation in the main living room of this property. Nestled at the rear of the property, this inviting space offers an idyllic retreat where you can unwind and recharge your spirits. Immerse yourself in the peaceful views over the extensive garden through the dual aspect windows, immersing yourself in nature's splendour. Whether you're savouring the vibrant flora or keeping a watchful eye on the children playing in the garden, the main living room provides an enchanting sanctuary. Revel in the serenity of this space as you create cherished memories with loved ones.

Snug/Study

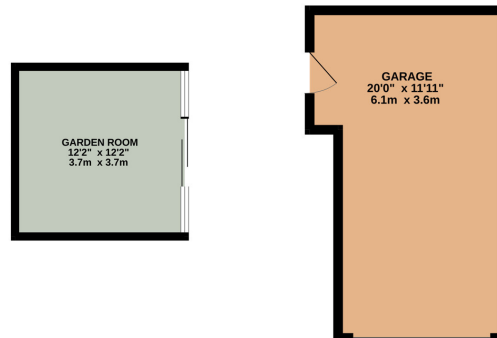
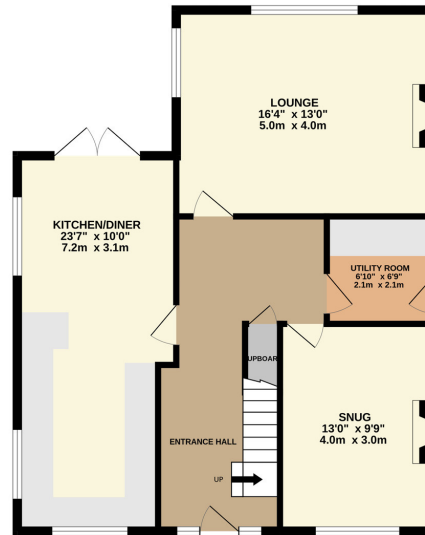
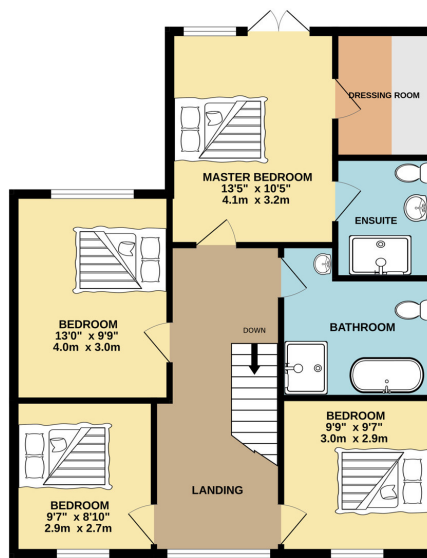
Conveniently located adjacent to the living room, the utility room is a practical area that offers valuable storage and additional functionality to the home. Fitted with cupboard units and thoughtfully designed, the utility room provides space for a washing machine and dryer, ensuring efficient household management. With a complimentary worktop, it offers a convenient space for various tasks. The utility room also features its own rear entrance, allowing easy access to the garden, making it an ideal transition area for outdoor activities.

Master Bedroom

Discover pure luxury in the spacious master bedroom. Tucked away at the rear of the home, this opulent retreat offers a private oasis where you can escape the hustle and bustle of everyday life. Abundant natural light pours in through the large french doors, creating a serene ambiance that invites tranquility and relaxation. Pamper yourself in the exquisite ensuite shower room, adorned with Italian imported tiled flooring, adding a touch of continental allure. The walk-in dressing area provides ample storage space, and the French doors open to a Juliette balcony, allowing gentle breezes to kiss your skin and create a seamless connection with the outdoors. Immerse yourself in ultimate luxury as you unwind in this haven of serenity.

Bedroom Two

Discover comfort and elegance in the second bedroom. Offering a charming rear view, this double bedroom is a retreat within the home. Imbued with a serene ambiance, it welcomes you to unwind and recharge amidst a tastefully decorated and thoughtfully designed space. Wake up to the sight of nature's beauty just outside your window, creating a picturesque backdrop for a peaceful start to your day. With generous proportions and meticulous attention to detail, this bedroom provides a comforting and inviting space for restful nights and tranquil moments of relaxation.



Bedroom Three

Enjoy a sense of elevated charm in the third bedroom. Boasting elevated views over the front of the property, this double bedroom offers a unique perspective of the surrounding rooftops and the enchanting tree-lined countryside. Immerse yourself in the beauty of the vista as you awaken to a picturesque scene each morning. The room itself is meticulously adorned, blending comfort and style seamlessly. With its inviting ambiance and attention to detail, this bedroom becomes a private haven where you can retreat and recharge, enveloped in the tranquil atmosphere created within.

Bedroom Four

Step into the fourth bedroom and be embraced by its undeniable charm. Featuring elevated views over the front surroundings, this double bedroom offers a delightful outlook over the rooftops and the captivating tree-lined countryside beyond. Immaculately decorated with meticulous attention to detail, it exudes a warm and inviting atmosphere. Rest and rejuvenate in this thoughtfully designed space, where comfort and tranquility merge to create a haven of serenity. Whether used as a guest room, a cosy sanctuary, or a creative space, this bedroom offers versatility and an inviting ambiance that leaves a lasting impression.

Family Bathroom

Indulge in the luxurious bathroom. This four-piece bathroom found on the first floor is a spacious oasis of relaxation. The standout feature is the captivating Victorian claw foot bath, which takes centre stage, inviting you to unwind in its embrace. A large shower, complete with a complementing Victorian rain head shower, adds a touch of opulence. The tiled floor, purposefully chosen to complement the overall aesthetic, enhances the sense of elegance and luxury. Immerse yourself in a blissful bathing experience within these beautifully designed and meticulously appointed spaces.

Garden Room

A fabulous garden room currently used as a home office, perfect for those who enjoy hybrid or WFH roles. Full electric and large french doors make this a fabulous retreat which could even be used as an additional guest bedroom!

Garden

Prepare to be enchanted by the extensive gardens that embrace this property. Offering panoramic views of the surrounding countryside, these generous grounds create a haven of natural splendour. With their carefully planned zoning, the gardens cater to a variety of preferences and offer a plethora of enticing spaces. Enjoy the lush lawns, meander through the mature hedges, and indulge in the fruits of the fruit trees that grace this idyllic setting. A charming garden room provides a tranquil escape, while a large sheltered patio adjacent to the lounge and kitchen diner becomes a captivating spot for outdoor relaxation and entertaining. These gardens truly provide an enchanting extension of the living space, inviting you to savour the beauty of nature at every turn.

The Essentials



The Black Bull
0.1 miles



Londis
0.2 miles
Co-op Caton
0.8 miles



The Station
0.8 miles



Boots
Pharmacy
0.9 miles





lunevalley

ESTATES.



Scan to visit our website!

Suite 8, Willow Mill, Caton, LA2 9RA
01524 256625
team@lunevalleyestates.com
lunevalleyestates.com