



Church Brow | Bolton-Le-Sands





3  1 

1  2+ 

 **lunevalley**
ESTATES.



EPC - tbc



B



Freehold





Nestled in the picturesque village of Bolton-le-Sands, this three-bedroom semi-detached property on Church Brow offers a fantastic opportunity to create your dream home. Situated in a sought-after location, this home is brimming with potential, awaiting your personal touch to transform it into a modern and stylish haven.



Key Features: Three Bedrooms: This property boasts three generously sized bedrooms, providing ample space for a growing family or those looking for a home office or guest room.

Modernisation Opportunity: With a vision and a little TLC, this property offers the perfect canvas to turn your renovation dreams into reality. Customise the interior to your taste and create a home that reflects your unique style.



Front and Rear Gardens: Enjoy the pleasures of outdoor living with both front and rear gardens. The front garden welcomes you with a delightful curb appeal, while the rear garden provides an ideal space for relaxing, gardening, or hosting outdoor gatherings.

Driveway and Garage: Convenience is at your doorstep with a driveway for off-road parking and a garage, ensuring your vehicles are secure and protected from the elements.

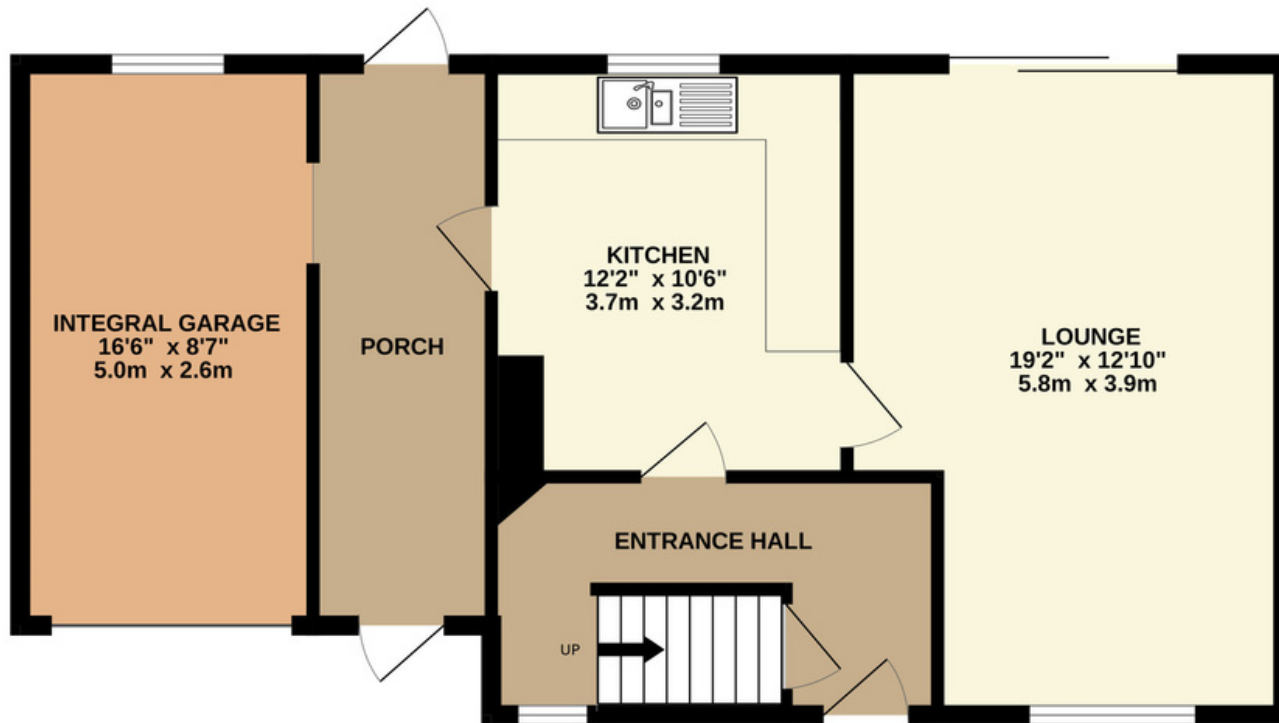
Sought-After Location: Church Brow is a well-regarded and tranquil residential area within Bolton-le-Sands. Residents here benefit from excellent local schools, amenities, and easy access to the stunning Morecambe Bay coastline.



Potential to Expand: Subject to planning permission, there is potential to extend the property to suit your needs further, making this a versatile investment. Embrace the opportunity to bring your interior design aspirations to life and create a home that perfectly suits your lifestyle. This property on Church Brow offers a prime location, great potential, and the chance to enjoy the beautiful surroundings of Bolton-le-Sands. Don't miss the chance to make this property your own and join the vibrant community of Bolton-le-Sands. Contact us today to arrange a viewing and start your journey towards crafting your ideal home.



GROUND FLOOR
670 sq.ft. (62.3 sq.m.) approx.



1ST FLOOR
447 sq.ft. (41.5 sq.m.) approx.



TOTAL FLOOR AREA : 1117 sq.ft. (103.8 sq.m.) approx.

Whilst every attempt has been made to ensure the accuracy of the floorplan contained here, measurements of doors, windows, rooms and any other items are approximate and no responsibility is taken for any error, omission or mis-statement. This plan is for illustrative purposes only and should be used as such by any prospective purchaser. The services, systems and appliances shown have not been tested and no guarantee as to their operability or efficiency can be given.

Made with Metropix ©2023

The Essentials



The Blue Anchor
0.4 miles



Tesco
2.3 miles



Far Pavilion
0.6 miles



Well
Pharmacy
0.7 miles





lunevalley

ESTATES.



Scan to visit our website!

Suite 8, Willow Mill, Caton, LA2 9RA
01524 256625
team@lunevalleyestates.com
lunevalleyestates.com