



11 Langdale Road | Carnforth







3 

2 

1 

 **lunevalley**  
ESTATES.



EPC - C



Band A



Freehold







Welcome to Langdale Road, Carnforth – where charm meets functionality in this delightful three-bedroom end terrace home. Nestled in a peaceful neighborhood, this residence offers a perfect blend of modern living and classic comfort. Parking is a breeze with space for four cars, ensuring convenience for both residents and guests. The end terrace location not only provides added privacy but also enhances the overall curb appeal of the property.



Langdale Road is ideally situated, offering easy access to local amenities, schools, and transport links, making it a prime location for families and professionals alike. Don't miss the opportunity to make this charming three-bedroom end terrace house your home. Contact us today to arrange a viewing and experience firsthand the comfort and lifestyle that Langdale Road has to offer. Your dream home awaits!





As you step inside, you're greeted by a warm and inviting entrance hallway with tiled effect flooring. The living room is bathed in natural light that creates a cozy atmosphere for relaxation and entertainment. The adjacent kitchen boasting contemporary fixtures and ample counter space for culinary adventures. Located adjacent to the Kitchen is a very handy Utility Room with plumbing and also a WC. Upstairs, two generously sized double bedrooms and a well-proportioned single bedroom await, each providing a tranquil retreat after a long day.

The tastefully designed interiors ensure a harmonious blend of style and practicality throughout the home. Step outside into the rear garden, a private oasis perfect for both quiet moments and lively gatherings. The garden boasts a timber garden room, offering versatility as a home office, a creative space, or simply a peaceful escape. Imagine enjoying your morning coffee or hosting intimate gatherings in this serene outdoor setting.

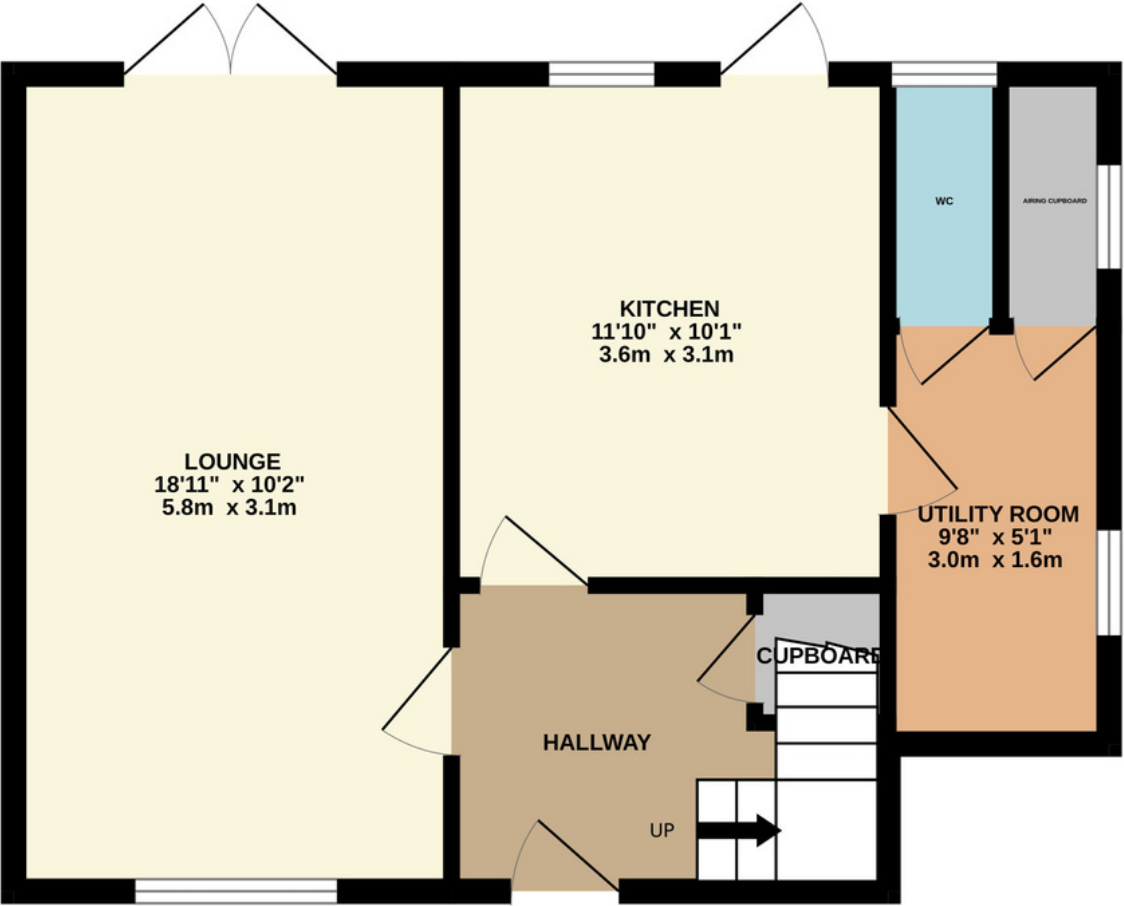




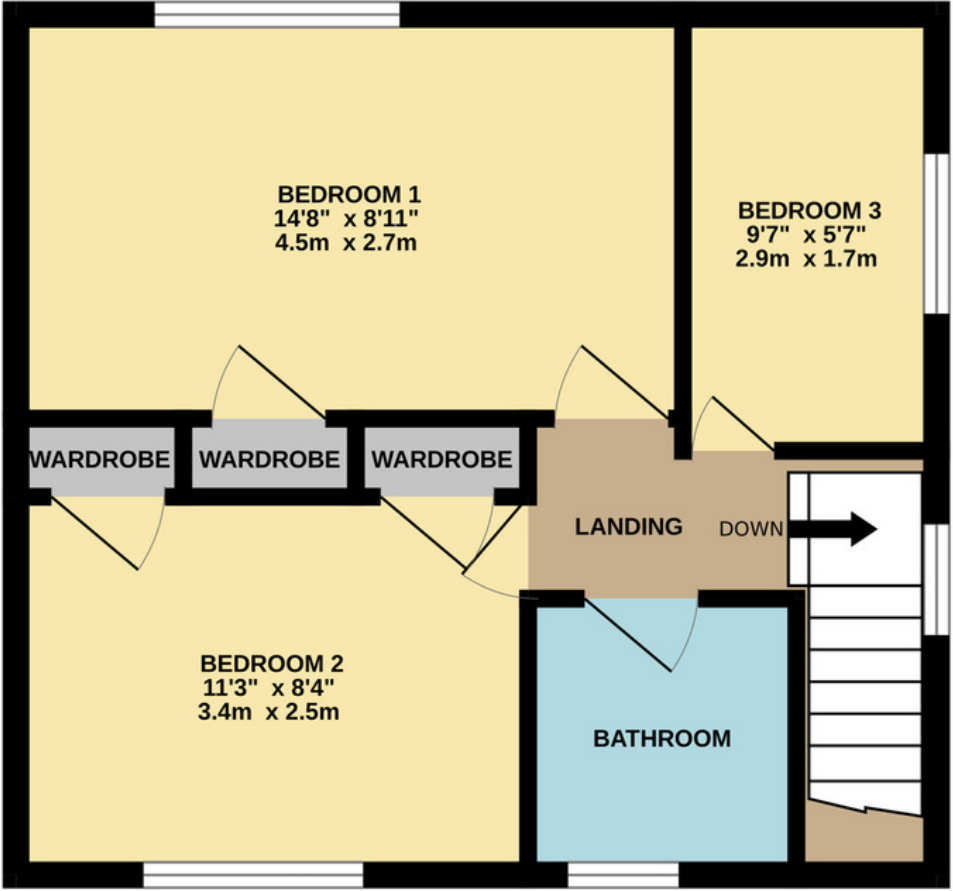




GROUND FLOOR



1ST FLOOR





# The Essentials



Taps On The  
Green  
*0.4 miles*



Aldi  
*0.8 miles*



The County  
Lodge & Brasserie  
*0.7 miles*



Boots Pharmacy  
*0.7 miles*







# lunevalley

## ESTATES.



*Scan to visit our website!*

Suite 8, Willow Mill, Caton, LA2 9RA  
01524 256625  
team@lunevalleyestates.com  
lunevalleyestates.com