



*Stone Bower*

BURTON-IN-LONSDALE



# STONE BOWER



Nestled within the serene beauty of Burton in Lonsdale, Stone Bower stands as a testament to timeless charm and historic allure. This Grade II listed double-fronted cottage exudes character and warmth, offering a quintessential countryside retreat that effortlessly blends traditional elegance with modern comforts. Stepping through the inviting entrance, you are greeted by the enchanting ambiance of a bygone era, where the modern Kitchen coupled with original features seamlessly intertwine. The cozy living room beckons with its welcoming fireplace, providing the perfect haven for relaxation and intimate gatherings. Natural light dances through the cottage's sash windows, illuminating the alluring interiors with a gentle glow. The heart of the home lies in its well-appointed kitchen, where culinary delights come to life. A harmonious fusion of functionality and charm, the kitchen offers ample space for both meal preparation and casual dining, creating a convivial atmosphere for family meals or entertaining guests.







Property Type:

*Semi-Detached*

Square Footage:

*958 sqft*

Council Tax Band

*C*

EPC Rating

*tbc*

Tenure

*Freehold*

*Take a closer look...*



# Why Burton?



BURTON IN LONSDALE IS A QUAIN AND PICTURESQUE VILLAGE NESTLED IN THE HEART OF THE LUNE VALLEY IN NORTH YORKSHIRE, ENGLAND. STEEPED IN HISTORY AND SURROUNDED BY BREATHTAKING NATURAL BEAUTY, BURTON IN LONSDALE OFFERS A SERENE ESCAPE FROM THE HUSTLE AND BUSTLE OF MODERN LIFE. ONE OF THE VILLAGE'S MOST STRIKING FEATURES IS ITS CHARMING STONE-BUILT HOUSES AND COTTAGES, WHICH LINE THE NARROW STREETS AND LANES, CREATING A TIMELESS AMBIANCE THAT HARKENS BACK TO A BYGONE ERA.

MANY OF THESE BUILDINGS ARE CONSTRUCTED FROM LOCALLY QUARRIED LIMESTONE, ADDING TO THE VILLAGE'S QUINTESSENTIAL ENGLISH CHARM. BURTON IN LONSDALE IS SITUATED CLOSE TO THE BORDERS OF BOTH LANCASHIRE AND CUMBRIA, MAKING IT AN IDEAL BASE FOR EXPLORING THE STUNNING LANDSCAPES OF THE YORKSHIRE DALES NATIONAL PARK, THE FOREST OF BOWLAND AREA OF OUTSTANDING NATURAL BEAUTY, AND THE LAKE DISTRICT NATIONAL PARK. OUTDOOR ENTHUSIASTS WILL FIND A WEALTH OF OPPORTUNITIES FOR HIKING, CYCLING, FISHING, AND WILDLIFE WATCHING RIGHT ON THEIR DOORSTEP.

## Burton Village







NESTLED ATOP A GENTLE RISE, THE ELEVATED FRONT GARDEN EXTENDS A WARM INVITATION TO WANDER THROUGH ITS VERDANT EXPANSE. BURSTING WITH THE LIVELY CHARM OF A COSY COTTAGE GARDEN, THIS ENCHANTING OASIS IS A SYMPHONY OF COLOURS AND SCENTS. LUSH FLOWER BEDS OVERFLOW WITH A KALEIDOSCOPE OF BLOSSOMS, WHILE FRAGRANT BLOOMS AND SHRUBS FILL THE GARDEN TO THE RIGHT SIDE.

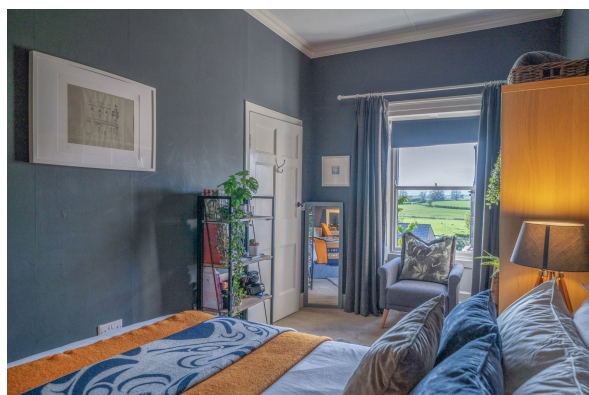
A QUAIN SUMMER HOUSE STANDS ON A PEBBLED AREA, ITS RUSTIC CHARM MAKING THE GARDEN FEEL WHOLE. FROM ITS VANTAGE POINT, IDYLIC VIEWS UNFOLD, AND THE OUTSIDE SEATING AREA PROVIDES A TRANQUIL RETREAT, WHERE TIME SEEMS TO STAND STILL, AND WORRIES MELT AWAY IN THE FACE OF SUCH NATURAL BEAUTY.





STONE BOWER  
BURTON





Zzz... 9000

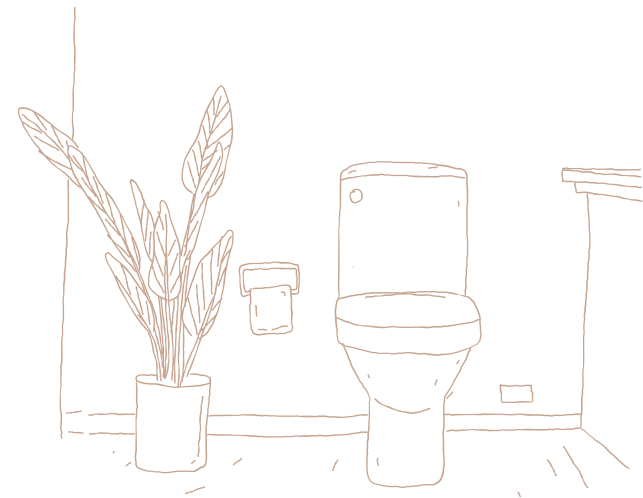












# WHERE CAN I FIND...



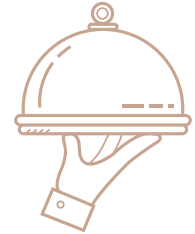
The Closest School?

Bentham Community Primary School is located just 2.6 miles away.



The Local Shop?

Burton Post Office Village Store is 371 ft from your doorstep. Great for those essentials!



A Delicious Meal?

The Lunesdale Arms and it's tasteful menu awaits you, only 3.5 miles away.



Somewhere Nice to Walk the Dog?

The River Greta is just a short 4 minute walk from your home 0.2 miles away.



A Refreshing Pint?

The Punch Bowl is just 0.1 miles round the corner, you could be back home in just 5 minutes!



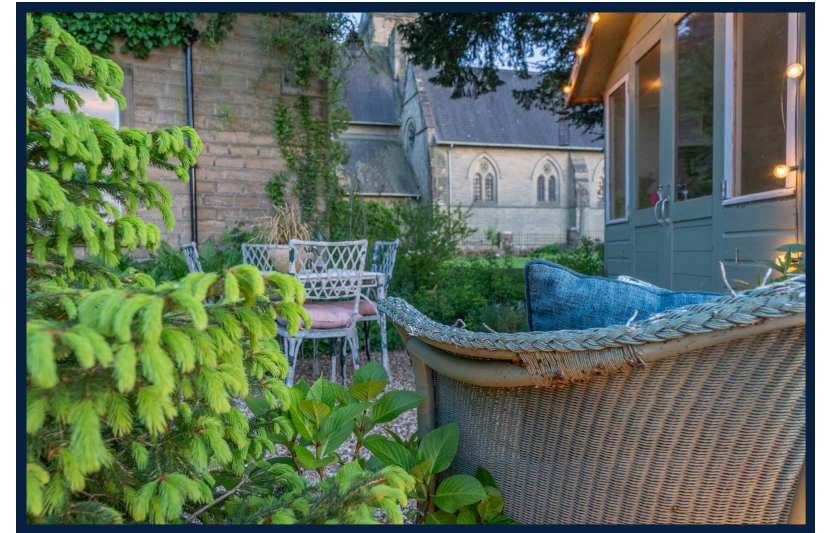
Your Local Property Experts?

Our lovely Lune Valley Team is Available via Email or phone 7 Days!

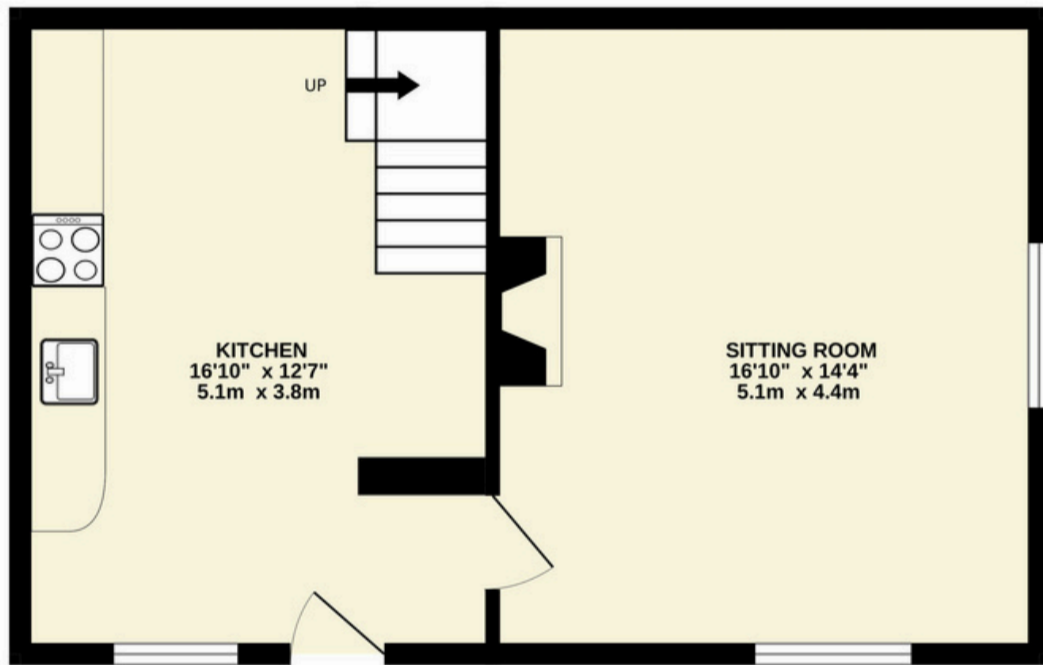




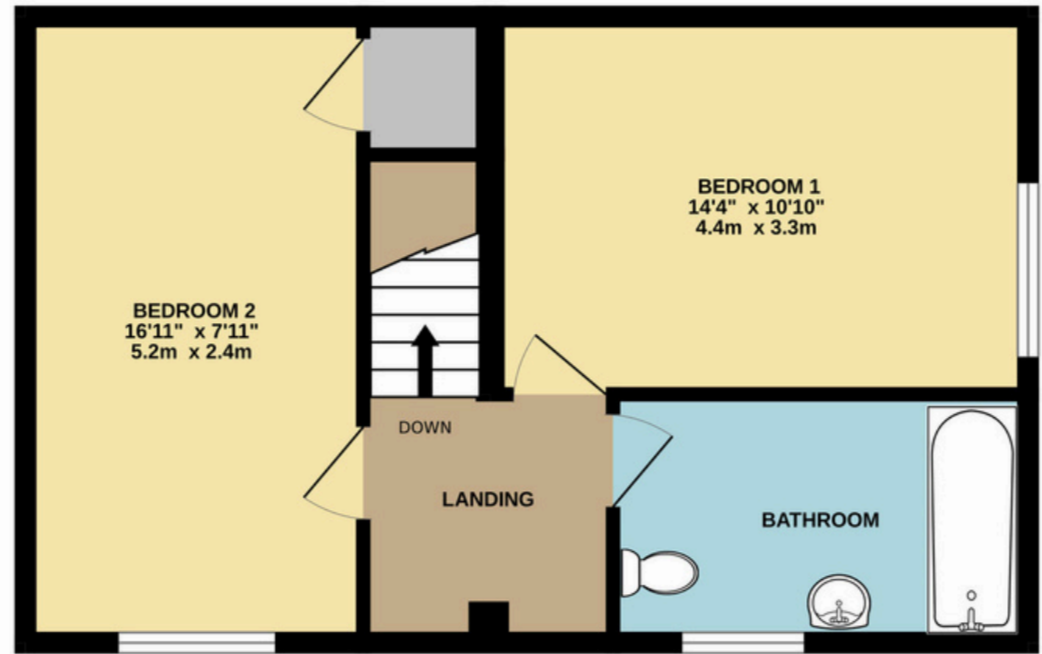








GROUND FLOOR



FIRST FLOOR

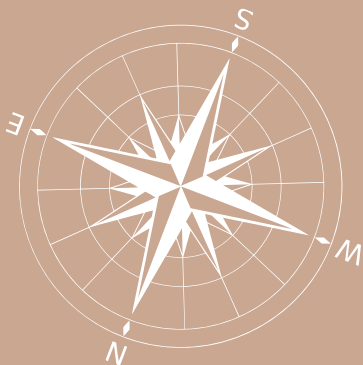


Total Floor Area: 958 sq.ft ( 89.0 sq.m) approx.

Ground Floor Area: 491 sq.ft ( 45.6.0 sq.m) approx.

First Floor Area: 467 sq.ft ( 43.4 sq.m) approx.

Whilst every attempt has been made to ensure the accuracy of this floorplan, measurements of doors, windows, rooms and any other items are approximate and no responsibility is taken for any error, omission or mis-statement. This plan is for illustrative purposes only and should be used as such by any prospective purchaser. The services, systems and appliances shown have not been tested and no guarantee as to their operability or efficiency can be given.





Stone Bower, 10 High Street, Burton in Lonsdale, Carnforth LA6 3JU



[///engine.comments.crumple](https://engine.comments.crumple)



015242 56625 | [team@lunevalleyestates.com](mailto:team@lunevalleyestates.com) | [www.lunevalleyestates.com](http://www.lunevalleyestates.com)