



Fairview

Cowan Bridge





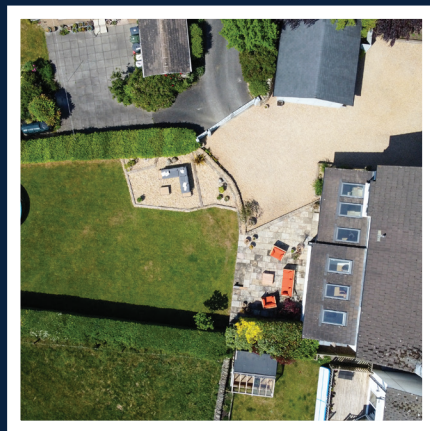
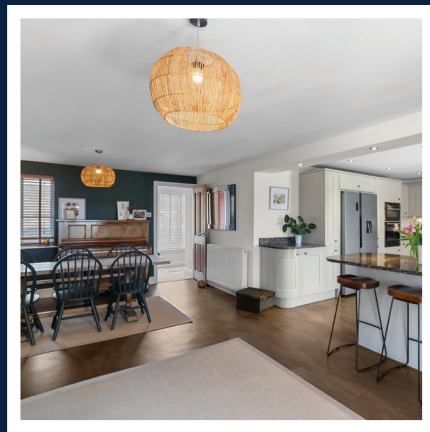
Fairview



Nestled on the edge of open countryside, Fairview is a beautifully presented family home offering an exceptional blend of rural charm and modern living. Located in the heart of Cowan Bridge, this spacious and thoughtfully renovated property boasts stunning views, expansive gardens, and a warm, stylish interior that makes the most of its picturesque surroundings. A short walk from the Yorkshire Dales National Park and nearby Kirkby Lonsdale.

Fairview is a substantial four-bedroom detached family home that offers an outstanding combination of space, comfort, and countryside charm. With its generous layout, extensive gardens, and prime location within a close-knit rural community, Fairview is a rare opportunity for families seeking the perfect place to put down roots.

From the moment you arrive, the sense of space and welcome is undeniable. Positioned on a large plot with ample off-street parking and a detached garage, this home is ideal for modern family life, offering both practicality and comfort in equal measure.



4 BEDS



2 BATH & 1 WC

- Set in the picturesque village of Cowan Bridge, just minutes from the vibrant town of Kirkby Lonsdale.
- Every inch of Fairview has been designed with families in mind — from the room sizes and layout to the excellent storage throughout.



Take a closer look...

Property Type:

Detached

Square Footage:

2302 sqft

Council Tax Band:

E

EPC Rating:

Tbc

Tenure:

Freehold

Why Cowan Bridge?



Cowan Bridge is a charming village with a strong sense of community and rural charm, surrounded by rolling countryside and scenic walks. There's a lovely local shop and tea room, and the wider area is rich in history and natural beauty.

Just down the road is the renowned market town of Kirkby Lonsdale, a thriving hub full of independent shops, excellent restaurants, cosy pubs, and outstanding schools — including the highly regarded Queen Elizabeth School (QES), making this area especially attractive to families. The nearby village of Leck adds to the appeal with its pretty surroundings and peaceful lifestyle and sought-after primary school.

For those who love the outdoors, the Yorkshire Dales and Lake District National Parks are both easily accessible, offering a wealth of outdoor activities including hiking, cycling, wild swimming, and more — ensuring an adventurous and healthy lifestyle for the whole family.



The Garden



The outdoor space is exceptional. To the rear, the garden stretches out into a vast, private area perfect for children to explore, play, and make memories. There's space for trampolines, football goals, raised beds for vegetable growing, or simply a relaxing evening drink on the patio as the sun sets. For those with green fingers, or anyone dreaming of al fresco family dining, this garden ticks every box. The detached garage offers additional storage or the potential to convert into a workshop, home office, or studio — adding even more flexibility to this already spacious property.



Garage



Parking



Garden





The Bedrooms



Upstairs, the home continues to impress. All four bedrooms are spacious doubles, giving each family member their own sanctuary.



Kitchen & Dining Room



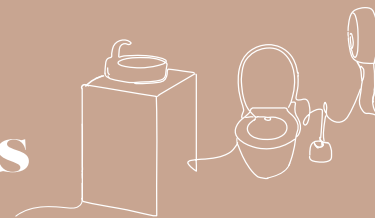
At the heart of the home is a huge open-plan kitchen and dining area, thoughtfully designed to bring the family together. Whether it's busy school mornings, relaxed weekend brunches, or hosting friends and extended family, this versatile space is built for both everyday moments and special occasions. Modern fitted units, extensive worktops, and quality appliances make it a pleasure to cook and spend time in.

The kitchen opens seamlessly into a spacious garden room, creating a flexible space for play, relaxing, or entertaining — all with beautiful views over the expansive garden. Large picture windows and doors invite the outside in, flooding the space with light and offering year-round connection to the outdoors.



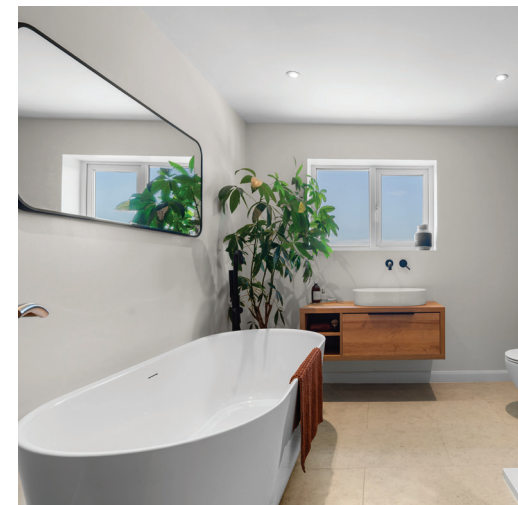


The Bathrooms

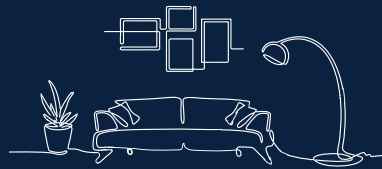


The master suite includes a beautifully appointed en suite bathroom offering privacy and luxury for parents. A smartly finished family bathroom with modern fittings caters easily to the rest of the household.

Downstairs is completed by a convenient WC, ideal for guests and busy households.



Lounge & Garden Room

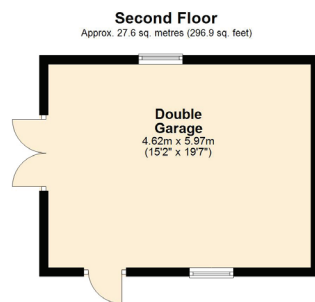
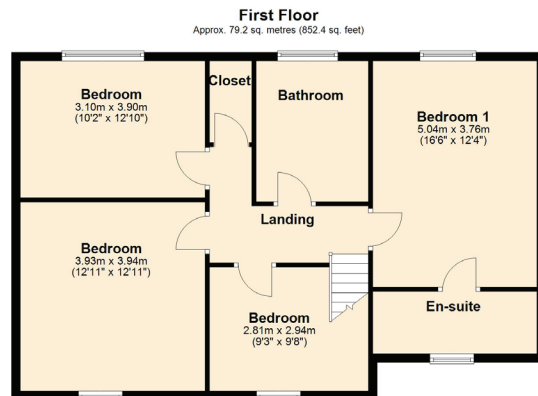
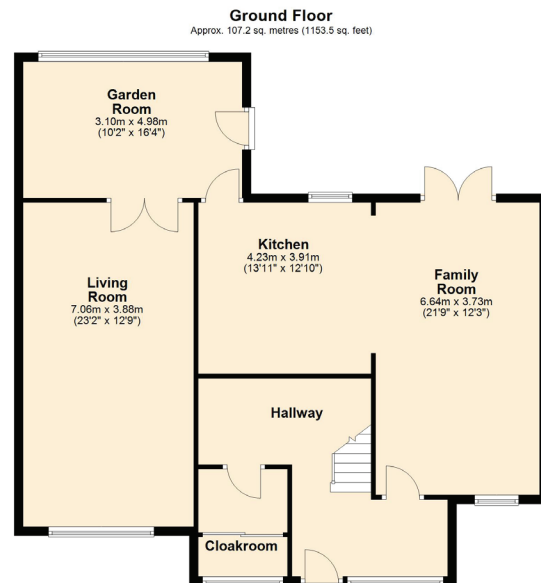


A separate, generously sized living room offers the perfect spot to unwind in the evenings, with plenty of space for the whole family to enjoy a movie night or quiet reading time.



 **lunevalley**
ESTATES.





Total Area: 213.9 sq. metres (2302 sq. feet)



About Lune Valley Estates

Nestled in the heart of the breath-taking Lune Valley we are a professional independent agency specialising in luxury property. We understand the significance of moving home and that both selling your existing home and finding the next one is as much financial as it is emotional. We combine local expertise, a strong network of partners and a proactive approach to ensure you have the best possible experience and can begin the next chapter with excitement.



“Honesty, integrity, and client care are fundamental values stitched into the fabric that makes Lune Valley Estates and we make them a part of everything we do.”





Fairview

Cowan Bridge

/// [///octagon.pinging.rips](http://octagon.pinging.rips)



015242 56625 | team@lunevalleyestates.com | www.lunevalleyestates.com