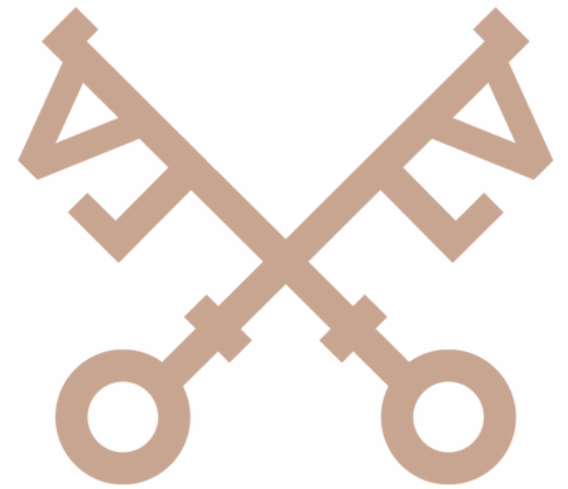




Whitbarrow Village Penrith



WHITBARROW VILLAGE, PENRITH



Tucked away at the foot of the majestic Blencathra Fells, Whitbarrow Holiday Village offers the perfect blend of rustic charm and modern luxury in the heart of the Lake District. Just a short drive from Penrith and Keswick, this beautiful resort combines converted Cumbrian farm buildings, cosy cottages and contemporary lodges, making it ideal for romantic escapes, family adventures or group getaways. Inside, character features like exposed stonework meet stylish, comfortable interiors, creating a true home-from-home.

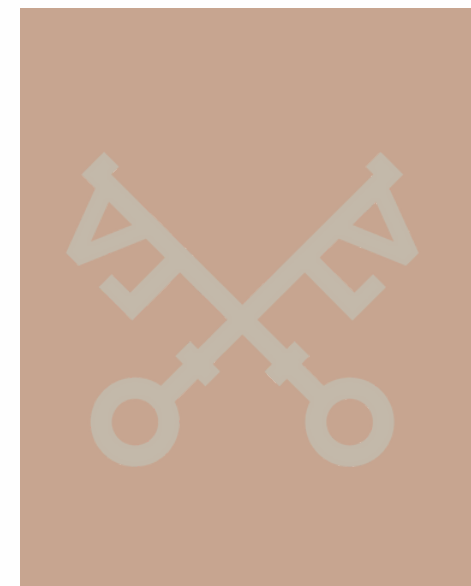
Beyond your front door, you'll find a wealth of facilities designed for relaxation and fun: take a dip in the heated indoor pool, unwind in the sauna or steam room, work out in the gym, or enjoy a leisurely family game of mini-golf. The Eden Café Bar serves up fresh, locally inspired dishes and drinks, perfect for lazy lunches or evenings spent unwinding together. Surrounded by rolling countryside and breathtaking views, Whitbarrow is a haven of peace and tranquillity, yet it's perfectly placed for exploring all that the Lakes have to offer—from scenic walks and cycling trails to charming villages and iconic landscapes. Whether you want to fill your days with adventure or simply relax in comfort, Whitbarrow Holiday Village is a destination that promises memories to treasure.





Take a closer look...





Property Type:

Lodge

Square Footage:

688 sqft

Bedrooms:

2

Bathrooms:

2

Tenure

Leasehold

3 Caldwell



Property Type:

Lodge

Square Footage:

883 sqft

Bedrooms:

4

Bathrooms:

1

Tenure

Leasehold

5 Caldwell



Property Type:

Lodge

Square Footage:

740 sqft

Bedrooms:

2

Bathrooms:

2

Tenure

Leasehold

3 Samont



Property Type:

Lodge

Square Footage:

578 sqft

Bedrooms:

2

Bathrooms:

1

Tenure

Leasehold

6 Rowscale



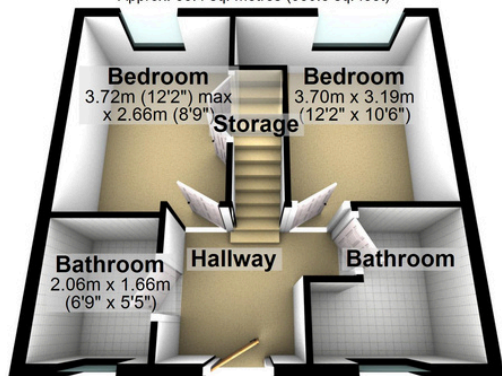


DANGER
DEEP WATER
KEEP OUT

3 Caldew Lodge

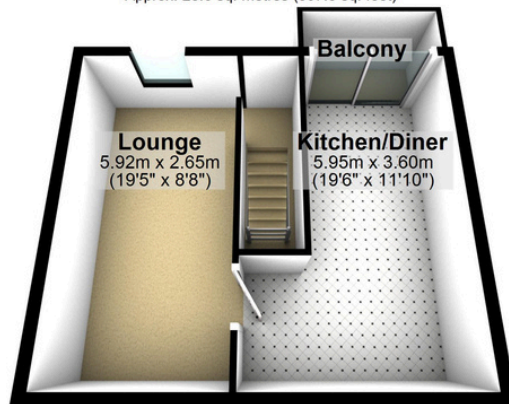
Ground Floor

Approx. 35.4 sq. metres (380.5 sq. feet)



First Floor

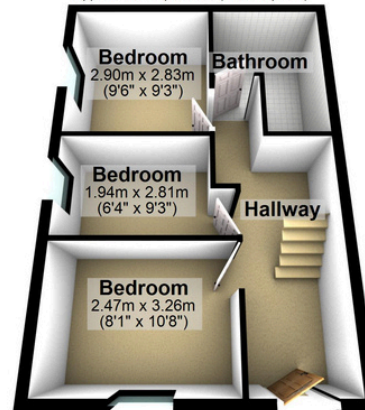
Approx. 28.6 sq. metres (307.5 sq. feet)



5 Caldew Lodge

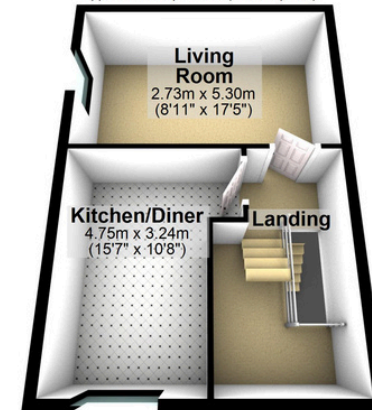
Ground Floor

Approx. 38.4 sq. metres (412.8 sq. feet)



First Floor

Approx. 38.4 sq. metres (412.8 sq. feet)



Second Floor

Approx. 5.4 sq. metres (57.9 sq. feet)



3 Eamont Lodge

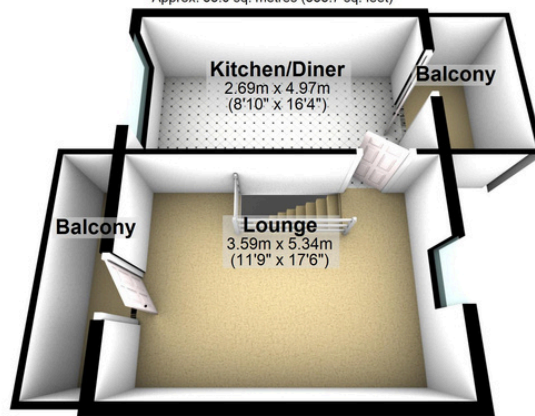
Ground Floor

Approx. 35.8 sq. metres (385.1 sq. feet)



First Floor

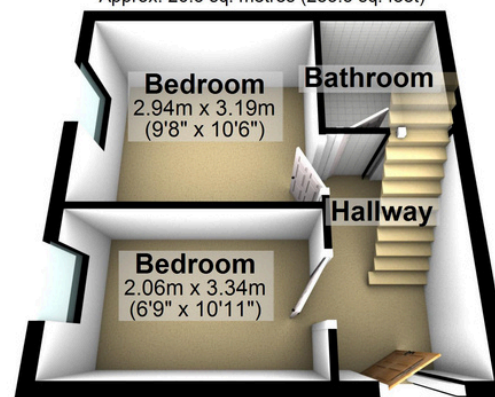
Approx. 33.0 sq. metres (355.7 sq. feet)



6 Bowscale Lodge

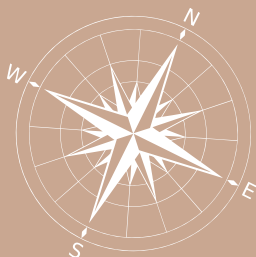
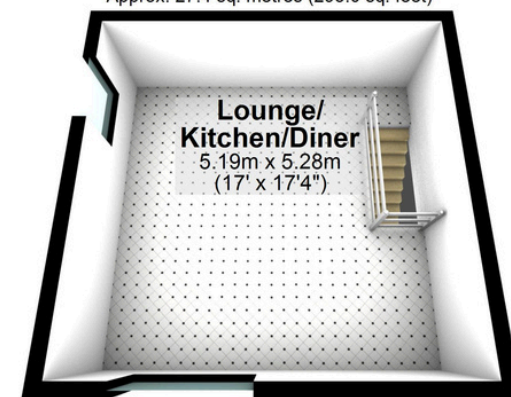
Ground Floor

Approx. 26.3 sq. metres (283.5 sq. feet)



First Floor

Approx. 27.4 sq. metres (295.0 sq. feet)



Whilst every attempt has been made to ensure the accuracy of this floorplan, measurements of doors, windows, rooms and any other items are approximate and no responsibility is taken for any error, omission or mis-statement. This plan is for illustrative purposes only and should be used as such by any prospective purchaser. The services, systems and appliances shown have not been tested and no guarantee as to their operability or efficiency can be given.

Whitbarrow Village

Penrith

Whitbarrow Village, Penrith, CA11 0XB



///depth.without.song



lunevalley
ESTATES.

015242 56625 | team@lunevalleyestates.com | www.lunevalleyestates.com